



LM.125 200-230V 50Hz 1~Ph	A4331005.05
LM.125 200-240V 60Hz 1~Ph	A4331005.06
LM.125 400-415V 50/60Hz 3~Ph	A4331007.05
LM.250 200-230V 50Hz 1~Ph	A4331010.05
LM.250 200-240V 60Hz 1~Ph	A4331010.06
LM.250 400-415V 60/60Hz 3~Ph	A4331012.05

Contents

Applications _____	1
Features _____	1
Options _____	3
Dimensions _____	4
Mounting position _____	4
Wiring 1-phase _____	5
Wiring 3-phase _____	5
Technical _____	5
specifications _____	5



LM.125



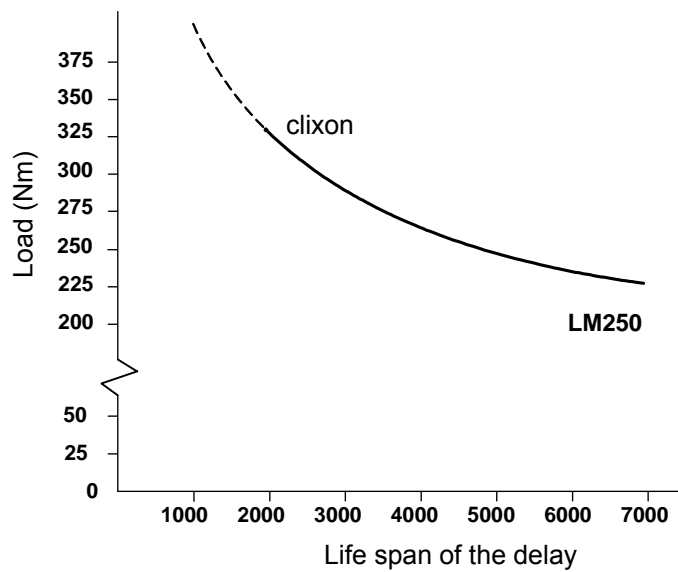
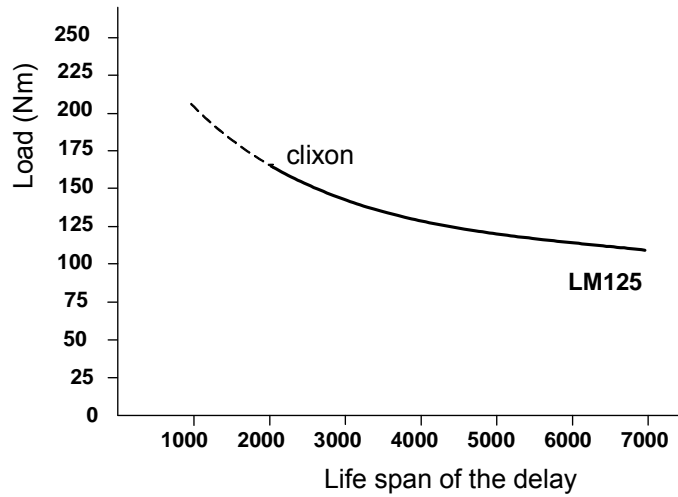
LM.250

Applications

Actuator to control air inlet valves or curtains.

Features

- The LM actuator is maintenance free.
- The LM motor has two driven shafts to which two cable reels or pipe/chain connections can be mounted.
- Various stroke lengths can be set.
- Available in 1-phase and 3-phase versions.
- Built-in potentiometer for position feedback.
- Built-in limit switches with easy adjustment of the end positions without special tools..
- Self-recovering thermal protection (clixon) which switches off the actuator in the event of overheating. The actuator will automatically re-activate when it has cooled down.
- Self-locking single worm drive. The worm shaft is made of high quality, hardened steel. The teeth have been sharpened for greater efficiency.
- The actuator can be mounted in five different positions (see mounting positions). A quick, easy and cheap installation is possible by placing pins through the corners of the housing (see LM mounting set).



The length of the motor's working life is influenced by the load, running time and the number of switch moments. This should be taken into account in situations where great tensile force and/or long running times are required



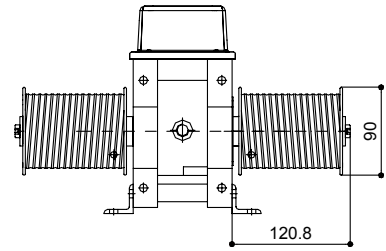
Options

A5450012 **Cable reel LM.125/250 80 mm**

Cable reel 80 mm

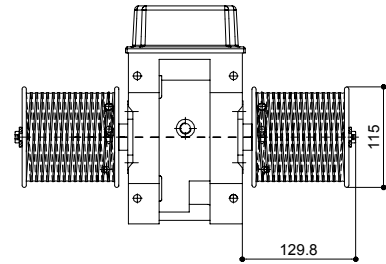
A5450013 **Cable reel LM.125/250 106 mm**

The LM.200 has two driven shafts, to which two cable reels, to wind a cable, can be mounted. The cable reels can be mounted to the left or right



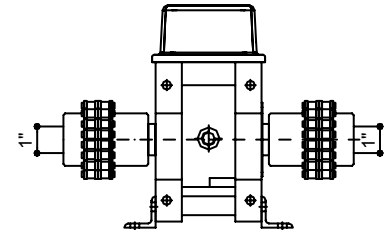
Max torque Nm	Cable diam. mm	Cable reel diam. mm	Cable reel circumf. mm	Capacity m
125	6	80	251	3.00
125	6	106	330	4.00
250	6	80	251	3.00
250	6	106	333	4.00

Cable reel 106 mm



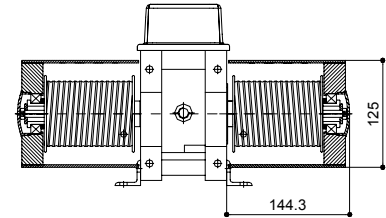
A5459022 **Pipe/chain connection LM.125/250**

The LM actuator has two driven shafts to which one or two pipe/chain connections to drive a 1" pipe can be mounted. The pipe/chain connection can be mounted to the left or right



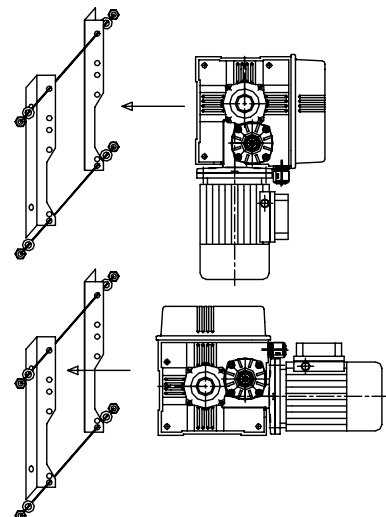
A2459132 **CE protection cover LM.125/250**

If the actuator is part of a ventilation system that is hung with reach of people/animals (less than 2.5 m / 8.2 ft above the floor), a CE protection cover must be mounted.



A5859007 **Bevestigingsset LM.125/250**

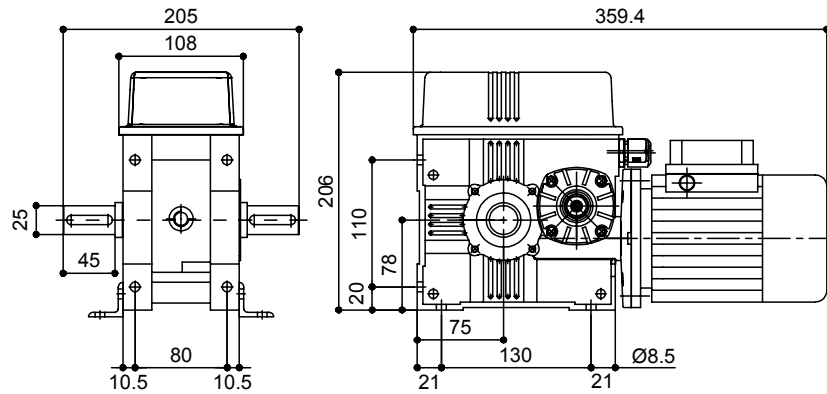
The mounting set makes it quick and easy to mount and demount the actuator. This mounting set can be used with both the LM.125, and the LM.250



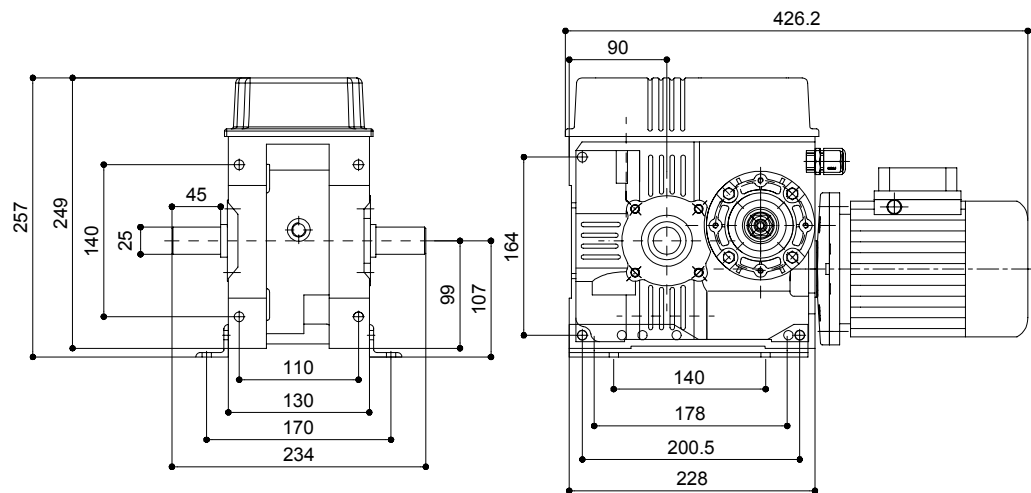


Dimensions

LM.125



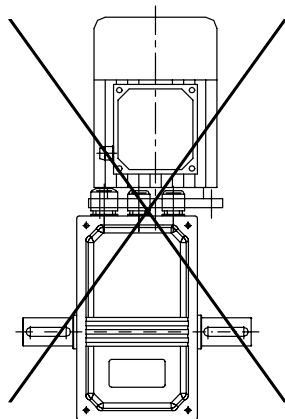
LM.250



Mounting position

The LM actuator can be suspended in every position, except with the electromotor in an upward position.

No air-release plugs required !!



**Wiring
1-phase**

←	4 x 1,5 mm ²	_____	Motor control
_____	3 x 0,8 mm (0,5 mm ²)	_____ →	Air inlet position feedback 0-10V

**Wiring
3-phase**

←	3 x 1,5 mm ²	_____	Motor control
_____	3 x 0,8 mm (0,5 mm ²)	_____ →	Air inlet position feedback 0-10V
_____	3 x 0,8 mm (0,5 mm ²)	_____ →	End switches

Technical**specifications****Power supply**

	1 phase 50Hz	1 phase 60Hz	3 phase Δ	3 phase Y
Voltage	230 Vac ±10%	240Vac ±10%	3x230 Vac ±10%	400-415Vac ±10%
Frequency	50Hz	60Hz	50/60Hz	50/60Hz
Max. current used LM.125	1,0 A	1,2A	0,8A	0,5A
Max. current used LM.250	1,8A	2,3A	1,0A	0,6A
Power consumption LM.125	0,09kW	0,09kW	0,09kW	0,09kW
Power consumption LM.250	0,18kW	0,18kW	0,12kW	0,12kW
Overload protection	Yes	Yes	No	Yes
Capacitor LM.125	10µF	10µF	not applicable	not applicable
Capacitor LM.250	18µF	18µF	not applicable	not applicable
Control	open/0/close	open/0/close	open/0/close	open/0/close

Actuator

Running speed at 50 Hz	2,0 RPM
Running speed at 60 Hz	2,4 RPM
Torque LM.125	125 Nm
Torque LM.250	250 Nm
Tensile force LM.125 cable reel Ø 80 mm	300 kg
Tensile force LM.125 cable reel Ø 106 mm	225 kg
Tensile force LM.250 cable reel Ø 80 mm	625 kg
Tensile force LM.250 cable reel Ø 106 mm	475 kg
Min. number of revolutions	1,5
Max. number of revolutions	12
Min.-max. stroke cable reel Ø 80 mm	35-300 cm
Min.-max. stroke cable reel Ø 106 mm	50-400 cm

Oil

Type	Shell Tivela WB 320
Amount LM.125	0,4 liter
Amount LM.250	1,2 liter

Accessories

Cable reel	Ø 80mm
Cable reel	Ø 106mm
Pipe / chain connection	Ø 1 inch

Housing

Aluminum, lacquered, protection class	IP55
Insulation class	F
Dimensions (l×w×h)	See drawing
Weight LM.125 1~fase/ 3~fase	9,5 / 9,4 kg
Weight LM.250 1~fase/ 3~fase	17 / 15,8 kg

Ambient climate

Operating temperature range	0°C to +40°C / 32 to 104°F
Storage temperature range	-10°C to 50°C / 14 to 122 °F
Relative humidity	< 95%, uncondensed